



ELECTRICAL CONDUIT

EMT | IMC | Rigid | Aluminum | Time-saving Products

AMERICAN
METAL

 **Western**Tube
A ZEKELMAN COMPANY

QUALITY CONDUIT. FRIENDLY SERVICE. FAST DELIVERY.

We know you have a lot of options for electrical conduit. That's why we work hard to be your first choice.

Why more distributors choose Western Tube:

- ✓ Tested for bendability and threadability
- ✓ Galvanization and polymer coatings resist corrosion
- ✓ Custom lengths available (10' standard)
- ✓ UL® approval label on all conduit and EMT
- ✓ Fast turnaround and on-time delivery

Local electrical specifications can vary greatly, but at Western Tube & Conduit Corporation, our goal is to deliver high-quality product that's as easy to use as possible, no matter where you, your customers or your projects are located.

Our conduit is approved for use as the equipment ground conductor in a circuit, which helps reduce wiring requirements and simplify installation for any project. Throughout production, we continuously monitor factors that can affect installation, such as bendability and wire push/pull capability.

Rounded edges help reduce the chance of wire abrasion, and all our conduit is sized or threaded to accommodate standard fittings. Solid, protective coatings inside and out ensure superior durability, even in the harshest environments.



Rigid Aluminum Conduit (RAC)

RAC is designed to provide decades of reliable service for dry, wet, exposed, concealed and hazardous locations. Made of a marine-grade 6063 alloy, RAC naturally resists corrosion. Each piece is threaded on both ends, with a coupling on one end and color-coded thread protector on the other. RAC is easy to cut and bend as needed.

Our RAC conforms to:

- UL-6A
- ANSI C80.5
- NEC Article 344
- WW-C-54-c

Rigid Aluminum Conduit Weights and Specifications (10' Lengths)

Trade Size	Metric Designator	Nominal OD	Nominal ID	Nominal Wall Thickness	Nominal Wt. per Foot With Coupling	Feet in Sub-bundle	Qty. in Master Bundle	Feet in Master Bundle	Nom. Wt. per Master Bundle	End Cap Color
	mm	in.	in.	in.	lbs.	ft.	qty.	ft.	lbs.	
½	16	0.840	0.632	0.104	0.281	100	-	2500	703	● Black
¾	21	1.050	0.836	0.107	0.374	100	-	2500	935	● Red
1	27	1.315	1.063	0.126	0.545	100	-	2000	1090	● Blue
1¼	35	1.660	1.394	0.133	0.716	-	100	1000	716	● Red
1½	41	1.900	1.624	0.138	0.887	-	100	1000	887	● Black
2	53	2.375	2.083	0.146	1.185	-	45	450	533	● Blue
2½	63	2.875	2.489	0.193	1.875	-	30	300	563	● Black
3	78	3.500	3.090	0.205	2.463	-	20	200	493	● Blue
3½	91	4.000	3.570	0.215	2.956	-	20	200	591	● Black
4	103	4.500	4.050	0.225	3.502	-	20	200	700	● Blue
5	129	5.563	5.073	0.245	4.789	-	8	80	383	● Blue
6	155	6.625	6.093	0.266	6.304	-	6	60	378	● Blue

Master bundle quantities conform to NEMA Standard RN-2. All Western Tube conduit is UL Listed.

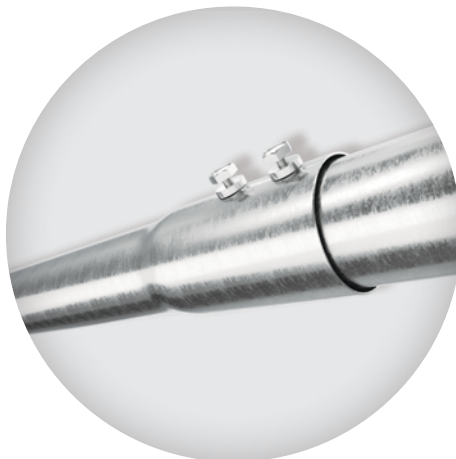
Time-saving Electrical Products

Attaching couplings to EMT and conduit might not seem to waste much time, but you'd be amazed at how quickly the seconds add up. To help contractors install raceways faster, Western Tube offers a full line of products with pre-installed fittings, as well as color-coded and extra-long conduit. They all work together to save time on every job.



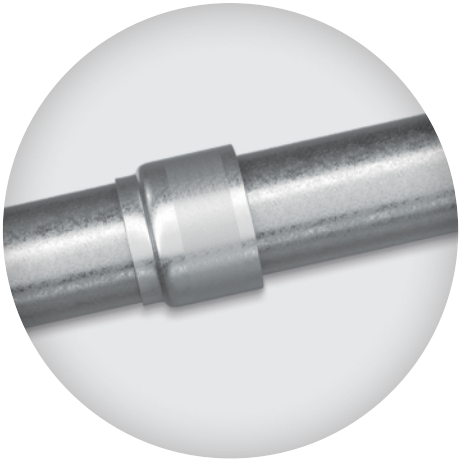
SmartCompression™ EMT

Western Tube's SmartCompression EMT with pre-installed compression coupling saves time on every job where compression couplings are specified or preferred. No need to fumble with loose couplings that have to be tightened individually. With SmartCompression EMT, just connect and tighten! Plus, the smooth ID coating allows for faster wire pulling.



SmartSet™ EMT

Western Tube's SmartSet EMT features an engineered steel set screw coupling on one end so you can work smarter—saving you time and money on every job. No need to purchase, inventory and install separate couplings!



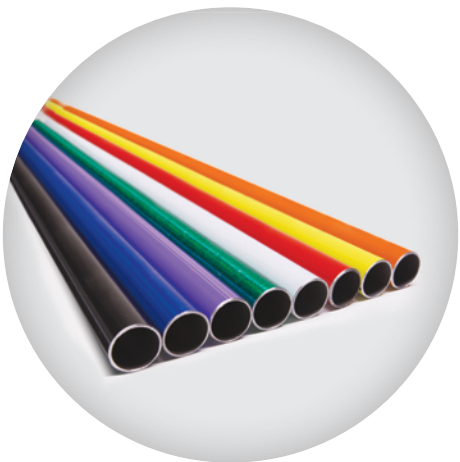
SpeedCouple

Western Tube's SpeedCouple pre-installed swivel coupling connects conduit much faster and cuts material costs by as much as 50%, compared with three-piece couplings. Just turn SpeedCouple, not the conduit. SpeedCouple is available on rigid metal conduit (RMC) and intermediate metal conduit (IMC).



20' EMT

Using 20' EMT requires special delivery and handling, but it's well worth the savings! You'll reduce coupling costs and installation time by at least 50%, compared to traditional 10' lengths.



Color EMT

When you have multiple raceways, it can be difficult to tell which circuit is which. Color conduit makes it easy to differentiate between emergency circuits, data transmission circuits, computer power circuits and more. We offer eight vibrantly colored, rust-resistant coatings that won't crack, flake or fade. The EMT itself is the same as our standard galvanized, UL Listed conduit; we just add dye to the outer organic coating to achieve the desired hue.



Electrical Metallic Tubing (EMT)

To manufacture our high-quality EMT, we use low-carbon strip steel that is electric-resistance welded into tubing and then in-line galvanized for superior rust protection. The conduit is then coated with a low-friction organic polymer inside and out to resist corrosion and make feeding wires easier. Before leaving our facility, our EMT undergoes testing to ensure it bends without kinking, flattening, flaking or cracking.

Our EMT conforms to:

- UL-797
- ANSI® C80.3
- NEC® Article 358
- WW-C-563

Standard EMT and Color EMT Weights and Specifications (10' Lengths)

Trade Size	Metric Designator	Nominal OD	Nominal ID	Nominal Wall Thickness	Nominal Wt. per Foot	Feet in Sub-bundle	Qty. in Master Bundle	Feet in Master Bundle	Nom. Wt. per Master Bundle	Banding Tape Color
	mm	in.	in.	in.	lbs.	ft.	qty.	ft.	lbs.	
½	16	0.706	0.622	0.042	0.30	100	700	7000	2090	● Black
¾	21	0.922	0.824	0.049	0.46	100	500	5000	2288	● Red
1	27	1.163	1.049	0.057	0.67	100	300	3000	2020	● Blue
1¼	35	1.510	1.380	0.065	1.01	50	200	2000	2010	● Red
1½	41	1.740	1.610	0.065	1.16	50	150	1500	1740	● Black
2	53	2.197	2.067	0.065	1.48	30	120	1200	1780	● Blue
2½	63	2.875	2.731	0.072	2.16	10	61	610	1320	● Black
3	78	3.500	3.356	0.072	2.63	10	51	510	1340	● Blue
3½	91	4.000	3.834	0.083	3.49	10	37	370	1290	● Black
4	103	4.500	4.334	0.083	3.93	10	30	300	1180	● Blue

Master bundle quantities conform to NEMA Standard RN-2. All Western Tube conduit is UL Listed.

Standard EMT Weights and Specifications (20' Lengths)

Trade Size	Metric Designator	Nominal OD	Nominal ID	Nominal Wall Thickness	Nominal Wt. per Foot	Feet in Sub-bundle	Qty. in Master Bundle	Feet in Master Bundle	Nom. Wt. per Master Bundle	Banding Tape Color
	mm	in.	in.	in.	lbs.	ft.	qty.	ft.	lbs.	
½	16	0.706	0.622	0.042	0.30	100	175	3500	1043	● Black
¾	21	0.922	0.824	0.049	0.46	100	125	2500	1144	● Red
1	27	1.163	1.049	0.057	0.67	20	75	1500	1010	● Blue
1¼	35	1.510	1.380	0.065	1.01	20	50	1000	1005	● Red
1½	41	1.740	1.610	0.065	1.16	20	37	740	861	● Black
2	53	2.197	2.067	0.065	1.48	20	37	740	1095	● Blue
2½	63	2.875	2.731	0.072	2.16	20	19	380	819	● Black
3	78	3.500	3.356	0.072	2.63	20	19	380	1001	● Blue
3½	91	4.000	3.834	0.083	3.49	20	19	380	1320	● Black
4	103	4.500	4.334	0.083	3.93	20	10	200	783	● Blue

Master bundle quantities conform to NEMA Standard RN-2. All Western Tube conduit is UL Listed.



Intermediate Metal Conduit (IMC)

IMC is manufactured as a cross between EMT and rigid metal conduit (RMC). A slightly thinner gauge than RMC, IMC is light but strong. It has the same electric-resistance welded tube-making process as EMT, but it is threaded like RMC, so the same couplings can be used for both. Like all of our electrical conduit, it is protected by zinc and organic coatings inside and out, and is thoroughly tested for bendability and threadability before being shipped.

Our IMC conforms to:

- UL-1242
- ANSI C80.6
- NEC Article 342
- WW-C-581

IMC Weights and Specifications (10' Lengths)

Trade Size	Metric Designator	Nominal OD	Nominal ID	Nominal Wall Thickness	Nominal Wt. per Foot With Coupling	Feet in Sub-bundle	Qty. in Master Bundle	Feet in Master Bundle	Nom. Wt. per Master Bundle	End Cap Color
	mm	in.	in.	in.	lbs.	ft.	qty.	ft.	lbs.	
½	16	0.815	0.659	0.078	0.62	100	350	3500	2170	Yellow
¾	21	1.029	0.836	0.083	0.84	50	250	2500	2100	Green
1	27	1.290	1.104	0.093	1.19	50	170	1700	2023	Orange
1¼	35	1.638	1.448	0.095	1.58	-	135	1350	2133	Green
1½	41	1.883	1.683	0.100	1.94	-	110	1100	2134	Yellow
2	53	2.360	2.150	0.105	2.56	-	80	800	2048	Orange
2½	63	2.857	2.557	0.150	4.41	-	37	370	1632	Yellow
3	78	3.476	3.176	0.150	5.43	-	30	300	1629	Orange
3½	91	3.971	3.671	0.150	6.29	-	24	240	1510	Yellow
4	103	4.466	4.166	0.150	7.00	-	24	240	1680	Orange

Master bundle quantities conform to NEMA Standard RN-2. All Western Tube conduit is UL Listed.



Rigid Metal Conduit (RMC)

Manufactured as the heaviest-gauge tubing available, RMC stands up to the most challenging physical environments. Our RMC is hot-dip galvanized and then coated in layers of chromate conversion and organic polymer for extra protection. This makes it especially strong and resistant to environmental and mechanical corrosion. A number of rigorous quality verifications must be passed—including bend and thread testing—before any RMC is approved to leave our facility.

Our RMC conforms to:

- UL-6
- ANSI C80.1
- NEC Article 344
- WW-C-581

Rigid Metal Conduit Weights and Specifications (10' Lengths)

Trade Size	Metric Designator	Nominal OD	Nominal ID	Nominal Wall Thickness	Nominal Wt. per Foot with Coupling	Feet in Sub-Bundle	Qty. in Master Bundle	Feet in Master Bundle	Nom. Wt. per Master Bundle	End Cap Color
	mm	in.	in.	in.	lbs.	ft.	qty.	ft.	lbs.	
½	16	0.840	0.632	0.104	0.82	100	250	2500	2060	● Black
¾	21	1.050	0.836	0.107	1.09	50	200	2000	2170	● Red
1	27	1.315	1.063	0.126	1.61	50	125	1250	2110	● Blue
1¼	35	1.660	1.394	0.133	2.18	30	90	900	1960	● Red
1½	41	1.900	1.624	0.138	2.63	-	80	800	2100	● Black
2	53	2.375	2.083	0.146	3.50	-	60	600	2100	● Blue
2½	63	2.875	2.489	0.193	5.59	-	37	370	2070	● Black
3	78	3.500	3.090	0.205	7.27	-	30	300	2180	● Blue
3½	91	4.000	3.570	0.215	8.80	-	25	250	2200	● Black
4	103	4.500	4.050	0.225	10.30	-	20	200	2060	● Blue
5	129	5.563	5.073	0.245	14.00	-	15	150	2100	● Blue
6	155	6.625	6.093	0.266	18.40	-	10	100	1840	● Blue

Master bundle quantities conform to NEMA Standard RN-2. All Western Tube conduit is UL Listed.



Service

We take a proactive approach to meeting our customers' needs. By working hard to understand your specific applications and requirements upfront, we're able to deliver unparalleled service and support every step of the way. Whether you need a quick turnaround or custom conduit, you can always trust us to be highly responsive, flexible and prompt in delivering your order.

Safety

When it comes to electrical raceways, we believe there's no safer option than metal conduit when you're looking for the best physical protection for wiring. Aluminum conduit ensures strength and excellent corrosion resistance, and steel conduit acts as an effective ground shield, minimizing EMI and external RFI.

Satisfaction

With Western Tube, quality is never a question. All of our products conform to the appropriate specifications, and our commitment to quality goes beyond that to include our processes and systems—we're fully compliant with ISO 9001:2015, as well. We strive for continual improvement and hold ourselves to the highest standards, with the goal of getting things right, right from the start.

Service, Quality & Friendship Since 1964

800.310.8823 | westerntube.com



Service, Quality & Friendship Since 1964

Western Tube & Conduit Corporation is the West Coast's leading manufacturer of electrical conduit. All of our products are certified to ISO 9001:2015 and conform to the appropriate industry specifications. The success of our customers is at the heart of our mission, which is why we pride ourselves on consistently producing high-quality products and delivering top-notch customer service. We will always work to be the best at what we do, so you can provide the best possible experience for your customers, too.

Trade association affiliates:



1600 Ritchie Court
Rochelle, IL 61068
800.310.8823
westerntube.com



Corporate Office
191 North Wacker Drive
Suite 2100
Chicago, IL 60606
312.275.1600
info@zekelman.com
zekelman.com